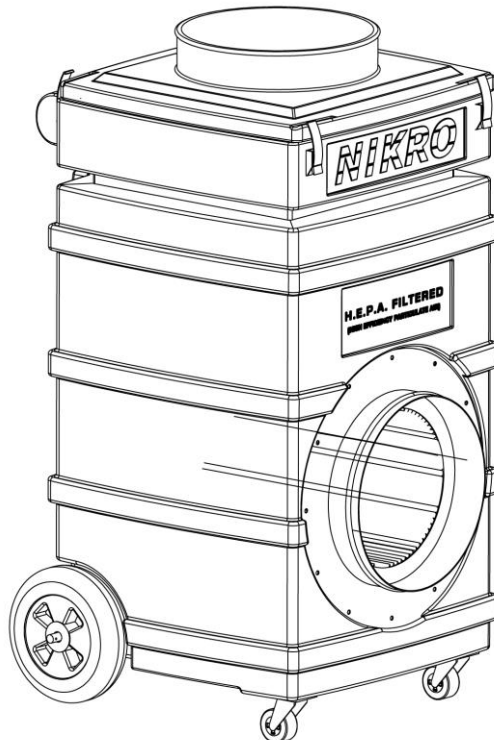


EXPRESS AIR BEAST1000

UPRIGHT AIR SCRUBBER

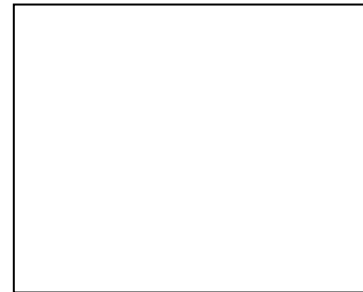
MODEL #BEAST1000

INSTRUCTION MANUAL



IMPORTANT SAFETY INSTRUCTIONS
READ ALL INSTRUCTIONS BEFORE USING THIS MACHINE.

“READ AND SAVE THESE INSTRUCTIONS”



RISK OF FIRE, ELECTRIC SHOCK, OR PERSONAL INJURY

- Unit must be electrically grounded.
- Do not use an adapter.
- Plug into matching three-pronged GFCI receptacle only.
- Do not operate in standing water.
- If electrical components become wet, allow to dry completely before using.
- Unplug unit before performing any maintenance, filter changes or cleaning.
- Inspect cord and plug for damage before use.
- Do not touch cord with wet hands or while standing on wet surface.
- Do not operate in flammable or explosive areas.
- Do not clean unit while plugged in.’
- This unit has been designed for indoor use only.
- Do not use to exhaust hazardous or explosive materials or vapors

IMPORTANT SAFETY INSTRUCTIONS

- a. “Do not operate any unit with a damaged cord or plug. Discard unit or return it to an authorized service facility for examination and/or repair.”
- b. “Do not run cord under carpeting. Do not cover cord with throw rugs, runners, or similar coverings.
- c. Arrange cord away from traffic area and where it will not be tripped over.”



All Nikro Industries Inc. products that have rated efficiencies of 99.97% @ 0.3 microns and/or 99.99% @ 0.3 microns, have H.E.P.A. filters that have been individually tested to meet these minimum efficiencies.

Although all the filters have been pre-tested, the possibility of leaks or filter failure due to handling, transportation, punctures, loaded filters, moisture, wear and tear, etc., does exist.

Therefore, when using this equipment in highly sensitive areas or where any release of particles above and beyond the minimum efficiencies would be detrimental and harmful to humans, plants or property; it is strongly recommended that the units be individually tested prior to their use, and monitored during their use.

This is to assure that they are maintaining the efficiency levels, which they were designed to filter out.

FAILURE TO DO SO COULD RESULT IN SERIOUS HARM TO HUMAN LIFE, PLANT LIFE AND/OR PROPERTY.



BACKDRAFTING AND CARBON MONOXIDE FUMES

To prevent the backdrafting of deadly carbon monoxide, when using your portable air scrubber to create a negative pressure in a containment area, turn off all open combustion devices such as but not limited to fireplaces, hot water heaters, furnaces, boilers etc.

1115 N. Ellsworth Ave., Villa Park, IL 60181
Telephone: 630-530-0558 FAX: 630-530-0740 Toll Free: 800-875-6457

Your #BEAST1000 Air Scrubbing System has been thoroughly tested and inspected at the factory and is fully assembled and ready for use. However, prior to plugging the unit in, inspect it for any damage that may have occurred during shipping. Inspect and tighten the HEPA filter hold down nuts, which may have loosened during transportation.

ELECTRICAL RATING:

115V 3.5 Amps 60 HZ

FILTER SET-UP PROCEDURES

The Model #BEAST1000 Air Cleaning unit is equipped with three stages of filtration as follows:

- #860958 1" Polyester Filter Pad (1ST Stage)
- #860959 2" Pleated Filter (2nd Stage)
- #862176 H.E.P.A. Filter (99.97% efficient @ 0.3 microns) (Final Stage)

1. Hold the dolly handle and tilt the unit back until it is laying horizontal on the floor and resting on the dolly handle and rear wheels. (See Photo 1 & 2)
2. Slide the #862176 HEPA filter into the cabinet housing and allow the threaded HEPA hold down rod (located inside the cabinet housing mounted on the back wall) to pass through the hole located on the HEPA filter end cap. Make sure that the HEPA filter drops into the back socket of the housing and that the gasket flange is resting on the outside of the cabinet housing. (See Photo 3 & 4)
3. Slide #862282 Rubber backed washer over the threaded HEPA filter hold down rod push it down thread making sure the rubber gasket on the washer rests against the HEPA filter end cap. (See Photo 4)
4. Take the #862281 HEPA filter tightening knob and thread it onto the threaded HEPA filter rod. (See Photo 6) **WARNING: DO NOT USE TOOLS TO TIGHTEN THIS KNOB!** Hand tighten as tight as possible, making sure that the gasket on the #862282 rubber backed washer is compressed. (See Photo 5)
5. Lift the machine up into the upright position. Unclamp the 4 latches and remove the intake door with the flange, which is located on the top of the machine. (See Photo 6)
6. Place #860959 2" Pleated Filter inside the housing cabinet this filter should be placed on the rubber sealing gasket with the air flow directional arrows on the filter pointing down towards the motor and blower assembly. (See Photo 7)
7. Take the #860958 1" Filter Pad and place it on top of the pleated filter. (See Photo 8)
8. Set the intake door with flange on top of the unit and snap the four latches into the locked position. (See Photo 9)
9. Unit is ready for use.



FILTER MAINTENANCE

When performing filter maintenance always wear proper personal protective equipment and clothing. Always follow safe working practices including proper disposal and handling of used filters in accordance with all federal, state and local regulations.

If a significant decrease in air flow is detected it is time to replace the prefilters. The #BEAST1000 is equipped with two prefilters #860958 1" Filter Pad (primary) and #860959 2" Pleated Filter (secondary). Replace these filters by following the filter set-up procedures on page 4 of this manual. To avoid cross contamination these filters should be changed at the end of every job.

The model #BEAST1000 Air Cleaning System is equipped with a red "Replace HEPA" light, located on the control panel of the unit. When the red illuminates fully (in highest speed position), HEPA filter maintenance is required and the HEPA filter will need to be replaced. (This filter cannot be cleaned or reused. Dispose of properly).

WARNING: The "Replace HEPA" light indicates loss in air flow only and alerts the operator that the HEPA filter is loaded and needs to be replaced. This light does not indicate and has no bearing on the level of filtration that the machine is operating at. Therefore, when using this equipment in highly sensitive areas or when any release of particulate above and beyond the minimum efficiency of 99.97% at 0.3 microns would be detrimental and harmful to humans, plants or property; it is strongly recommended that these units be individually tested prior to their use and monitored during operation.

**NOTE: FILTERS SHOULD BE REPLACED IMMEDIATELY IF TORN OR DAMAGED.
USE OF ANY OTHER FILTERS THAN ORIGINAL NIKRO REPLACEMENT PARTS VOIDS THE PRODUCT
WARRANTY AND PERFORMANCE CLAIMS
TO AVOID CROSS CONTAMINATION CHANGE ALL FILTERS AFTER EVERY REMEDIATION
JOB AND CLEAN ENTIRE UNIT THOROUGHLY BEFORE REMOVING IT FROM THE CONTAINMENT AREA.**

BEFORE OPERATING THE UNIT

1. Inspect cord and plug for damage.
2. Visually inspect the HEPA Filter for damage, punctures or tears. If you are operating in or exhausting into a highly sensitive area it is strongly recommended that this unit is independently tested to assure proper filtration efficiencies.
3. Inspect and tighten the HEPA filter hold down knob, which may have loosened during transportation of the unit.

TRANSPORTING AND STORING UNIT

1. Always handle this unit with care. Rough handling such as dropping, or tipping over the unit, bouncing around in a vehicle, and impact from rolling over or off of curbs, stairs and other platforms, could cause serious damage to this unit.
2. Always clean and decontaminate unit before storing it. Store this unit indoors in a dry location.

TROUBLE SHOOTING

PROBLEM	POSSIBLE CAUSE	REMEDY
Machine will not start	Power cord unplugged	Plug cord into outlet
	Blown or tripped circuit breaker	Replace/reset building fuse or breaker
	Tripped thermal protector on motor	Turn off unit and let cool for Approximately 20 minutes, then turn back on.
	Tripped ground fault	Reset the ground fault outlet by Pressing the reset button
	Motor speed control set to low	Start motor in highest speed position then lower speed after start-up
Machine will not run continuously	Not enough amperage	Use a larger circuit or remove other appliances from circuit
	Extension cord too long or inappropriate gauge.	Use a 12 gauge extension cord Maximum length 50'
Red "Replace HEPA" light illuminates	HEPA Filter loaded	Replace HEPA Filter

CLEAN AIR EXHAUST DISCHARGE

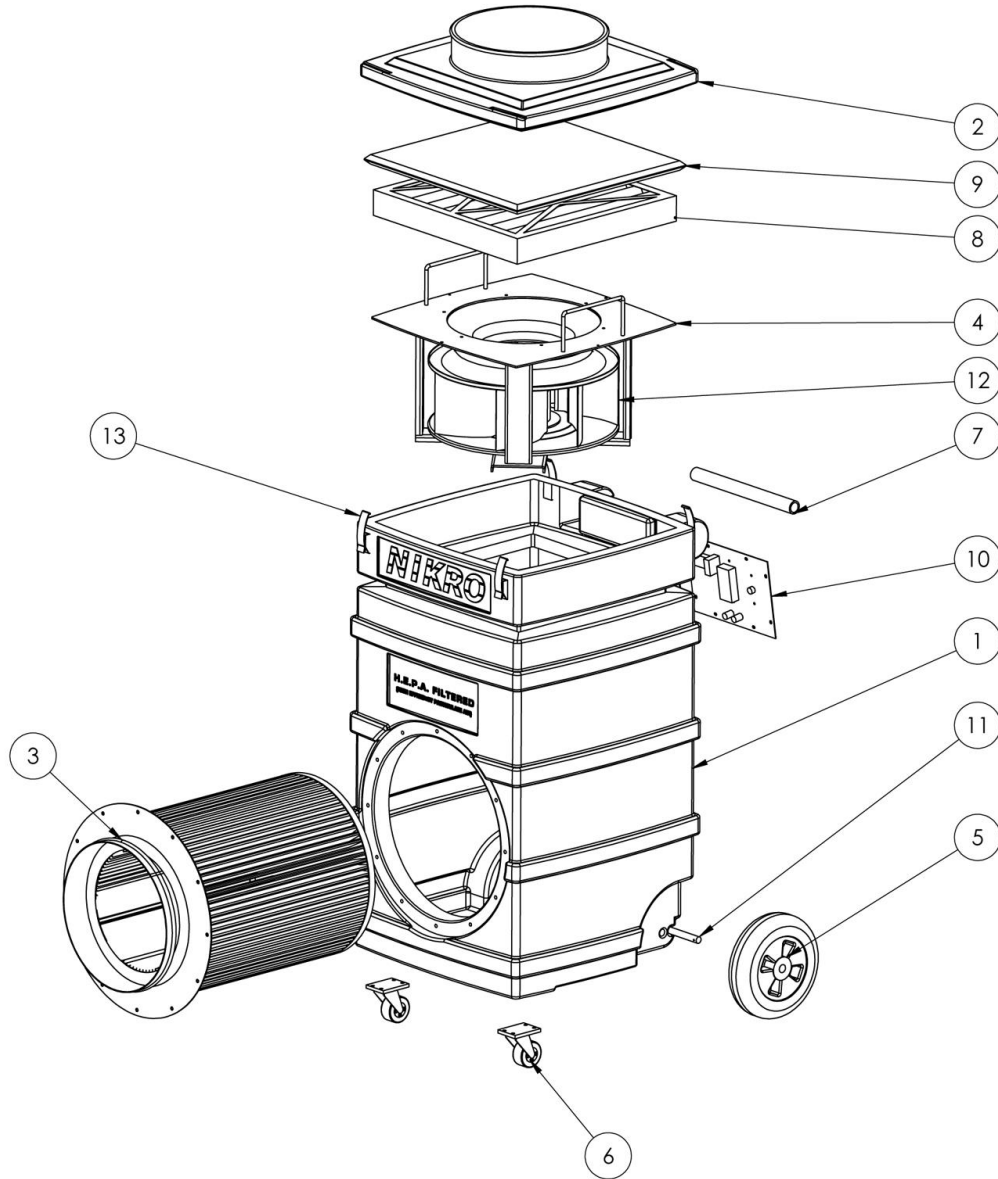
This portable air scrubber allows the operator to connect a 12" exhaust hose to the unit allowing for remote or controlled exhausting and/or to create a controlled negative pressure in a contained area. Simply connect a 12" hose (#860243) to the 12" exhaust flange located on the back/exhaust end of unit and extend the hose to the desired area you wish to exhaust to.

AIR INTAKE FLANGE

This scrubber also has an air intake flange, which allows the operator to connect a 12" hose and place the open end of the hose in a contaminated area and the air scrubber in another remote area.



#BEAST1000 ASSEMBLY



PC NO	PART NO	PART NAME	QTY
1	862193	POLY CABINET	1
2	862222	CABINET DOOR	1
3	862176	HEPA FILTER	1
4	862224	MOTOR HOUSING ASSY	1
5	862195	8" WHEEL	2
6	862221	2" CASTER	2
7	862226	PS1000 HANDLE	1
8	860959	16"X16"X2" PLEATED FILTER	1
9	860958	17"X17"X1" FILTER PAD	1
10	862227	CONTROL PANEL	1
11	862225	PS1000 AXLE	1
12	862223	MOTORIZED IMPELLAR	1
13	862199	LATCH	4
NOT SHOWN	862281	HEPA FILTER TIGHTENING KNOB	1
NOT SHOWN	862282	RUBBER BACKED WASHER	1

CONTROL PANEL



PC NO	PART NO	PART NAME	QTY
1	861026	VARIABLE SPEED CONTROL	1
2	862110	GFCI OUTLET	1
3	860976	CIRCUIT BREAKER	1
4	860954	HOUR METER	1
5	861067	POWER INDICATOR LIGHT	1
6	520005	FILTER INDICATOR LIGHT	1
7	860721	PRESSURE RELIEF BARB	1

WARRANTY

Nikro Air Scrubbers are warranted for 1 year from the date delivered to the original end user and may not be assigned or transferred.

Parts, which become defective due to faulty workmanship or materials during normal use in this period will be repaired or exchanged at no charge if returned and approved by an authorized Nikro service center. All replaced or repaired parts shall only be warranted for the remainder of the original one year warranty period.

After the expiration of the one year warranty, all warranties on this unit including fitness for a proposed usage or purpose will become void.

The end user shall be responsible for freight charges incurred to deliver warranted product to an approved Nikro service center. Nikro shall be responsible for freight charges incurred in returning unit to customer, but not to exceed the original freight charges to customer.

It shall be wholly Nikro's decision to repair, replace or refund the purchase price of any such defective goods.

This warranty does not apply to normal wear and tear, neglect, misuse, abuse or incorrect installation. If any other replacement parts, filters or attachments are used other than original Nikro parts, this warranty will become void.

Nikro disclaims responsibility for loss of production, profits, goodwill or any other costs that may indirectly occur due to the failure of this product.

H.E.P.A. FILTER STANDARDS AND CERTIFICATION

All Nikro H.E.P.A. filters are manufactured and individually tested using the MIL-STD 282 D.O.P. test, or the IEST-RP-CC-001.3 test method.

Each filter is tested and certified to have a minimum efficiency of 99.97% @ 0.3 micron particles. All filters are then individually labeled and registered by the manufacturer.

All H.E.P.A. filters used in Nikro equipment meet, and in most cases, exceed the minimum standard of 99.97% efficiency @ 0.3 micron particles, and comply with OSHA and EPA standards for cleaning the air of toxic and nuisance dust such as mold, lead and asbestos.